

CONCRETE FOOTING

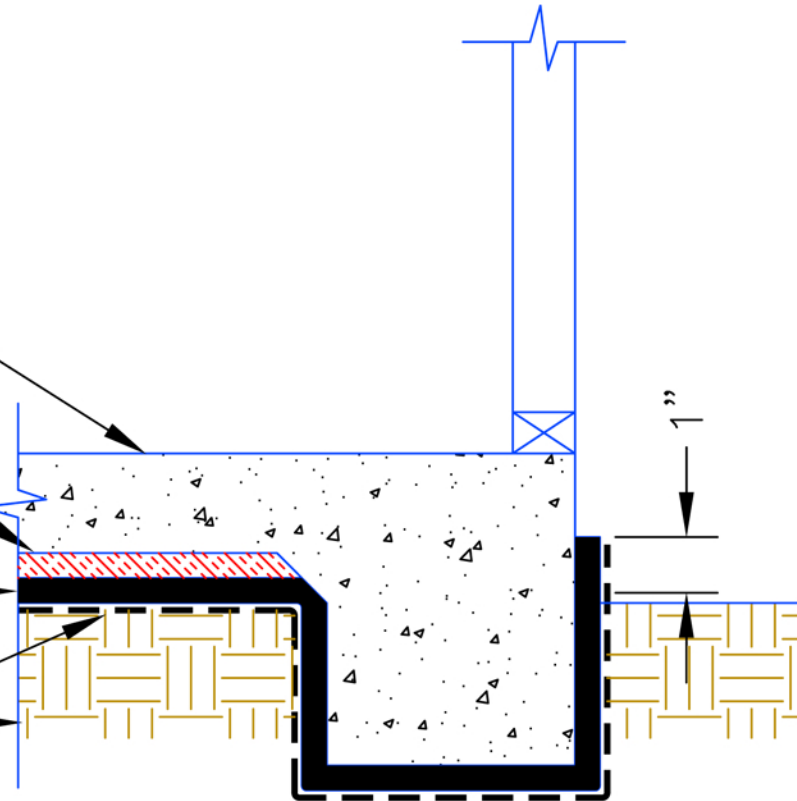
LIQUID BOOT® UltraShield G-1000

60 DRY MILS LIQUID BOOT®

LIQUID BOOT® BaseFabric

SUBGRADE

NOTE:
TERMINATE MEMBRANE 1" ABOVE FINISH
GRADE



GAS VAPOR BARRIER FOOTINGS AND GRADE BEAMS

© 2009 CETCO Remediation Technologies

NOT TO SCALE

G2.3